



Stan 21

Povučeni sprat

Dvoiposoban

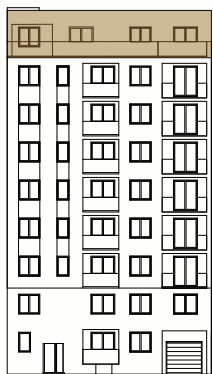
### PROSTORIJA

1. Predsoblje
2. Kupatilo
3. Hodnik
4. Soba
5. Soba
6. Boravak, trpezarija
7. Kuhinja
8. Terasa

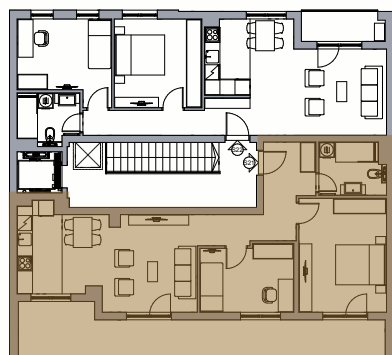
### POVRŠINA

1. 5.48 m<sup>2</sup>
2. 5.32 m<sup>2</sup>
3. 4.56 m<sup>2</sup>
4. 15.92 m<sup>2</sup>
5. 9.89 m<sup>2</sup>
6. 19.68 m<sup>2</sup>
7. 6.42 m<sup>2</sup>
8. 23.32 m<sup>2</sup>

**90.59 m<sup>2</sup>**



Položaj stana na fasadi



Položaj stana na osnovi

