



Stan 22

Povučeni sprat

Trosoban

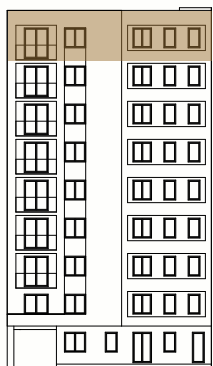
### PROSTORIJA

1. Predsoblje
2. Boravak, trpezarija
3. Kuhinja
4. Hodnik
5. Kupatilo
6. Soba
7. Soba
8. Terasa

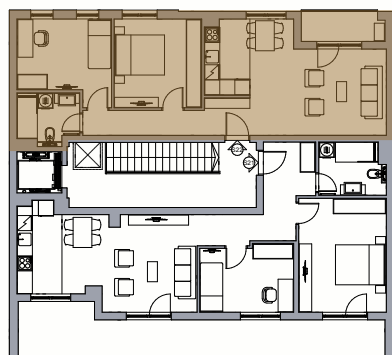
### POVRŠINA

- |                        |                      |
|------------------------|----------------------|
| 1. Predsoblje          | 2.73 m <sup>2</sup>  |
| 2. Boravak, trpezarija | 20.90 m <sup>2</sup> |
| 3. Kuhinja             | 5.36 m <sup>2</sup>  |
| 4. Hodnik              | 4.85 m <sup>2</sup>  |
| 5. Kupatilo            | 4.62 m <sup>2</sup>  |
| 6. Soba                | 11.53 m <sup>2</sup> |
| 7. Soba                | 12.43 m <sup>2</sup> |
| 8. Terasa              | 3.92 m <sup>2</sup>  |

**66.34 m<sup>2</sup>**



Položaj stana na fasadi



Položaj stana na osnovi

