



Stan 20

Šesti sprat

Trosoban

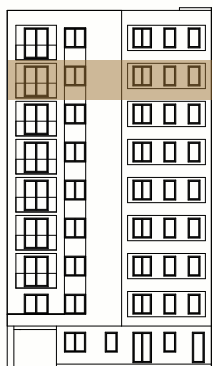
PROSTORIJA

1. Predsoblje
2. Boravak, trpezarija
3. Kuhinja
4. Hodnik
5. Kupatilo
6. Soba
7. Soba
8. Terasa

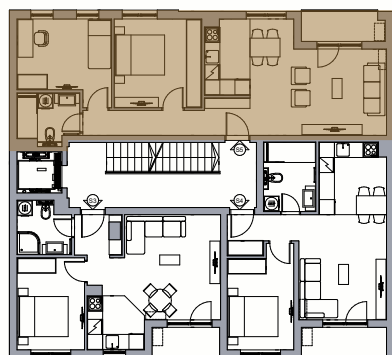
POVRŠINA

- | | |
|------------------------|----------------------|
| 1. Predsoblje | 2.73 m ² |
| 2. Boravak, trpezarija | 20.90 m ² |
| 3. Kuhinja | 5.36 m ² |
| 4. Hodnik | 4.85 m ² |
| 5. Kupatilo | 4.62 m ² |
| 6. Soba | 11.53 m ² |
| 7. Soba | 12.43 m ² |
| 8. Terasa | 3.92 m ² |

66.34 m²



Položaj stana na fasadi



Položaj stana na osnovi

