



Stan 1

Prizemlje

Jednosoban

**PROSTORIJA**

1. Predsoblje
2. Kupatilo
3. Boravak, trpezarija, kuhinja
4. Terasa

**POVRŠINA**

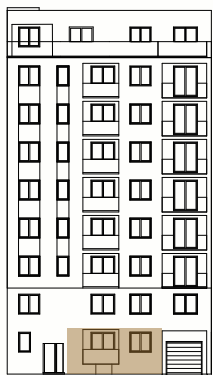
3.30 m<sup>2</sup>

4.10 m<sup>2</sup>

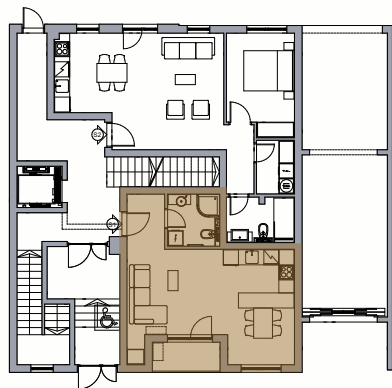
26.72 m<sup>2</sup>

3.24 m<sup>2</sup>

**37.36 m<sup>2</sup>**



Položaj stana na fasadi



Položaj stana na osnovi

